

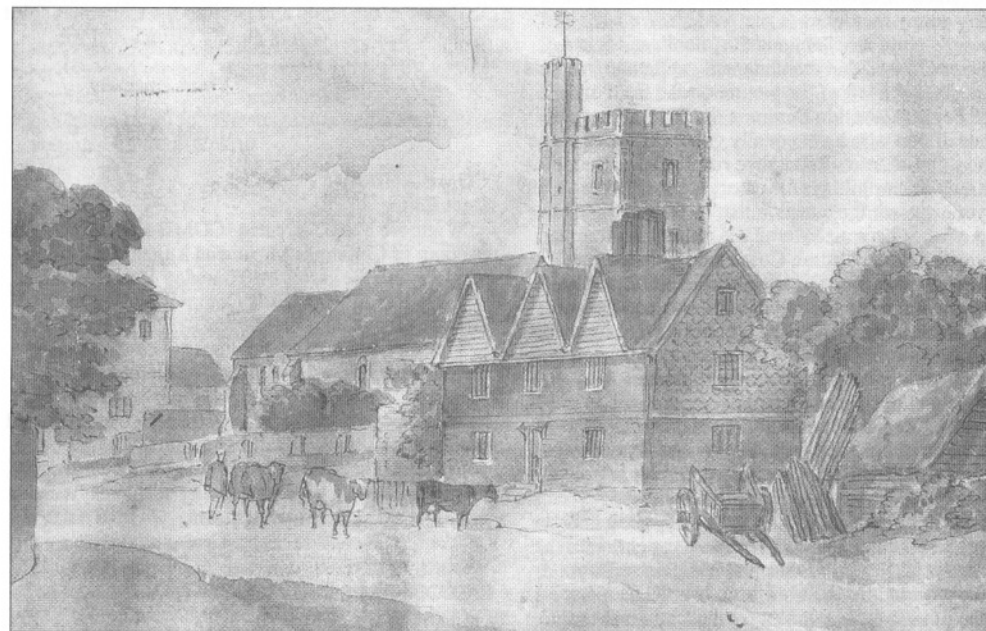
ACTION FORUM

AN INDEPENDENT MONTHLY FOR RAINHAM AND THE SURROUNDING AREA

DECEMBER 2002

NUMBER 374

We Wish you a Happy Christmas



This watercolour painting of Rainham High Street has some 'artistic licence'. The painting was acquired by Mr Edwin Jelly in 1908 and belonged to a collection dated 1790-1800. Freddie Cooper continues his article 'The Changing Face of Rainham' on page 8.

Robert J. Kitney

Building Contractor of Repute and Distinction

BRICK EXTENSIONS AND
COMPLETE HOUSES
ALSO MAINTENANCE
DIVISION



Medway 363669

NO JOB TOO BIG
OR TOO SMALL

WHERE NO INFERIOR TRADESMEN OR MATERIALS ARE USED

AF

Next Issue: January 18th 2003
Copy Date: Dec 30th Sm Ads Jan 3rd

Editorial: Mrs Barbara Mackay Miller,
5 Meresborough Cotts, Tel: 231307.

Advertising: Hamish Mackay Miller,
5 Meresborough Cotts, Tel: 231307.

Editorial

The two Rainham Secondary Schools which opened in Orchard Street in the 1930s obviously bring back many happy memories to our readers. We have received more recollections this month and it has been confirmed that the unnamed gentleman in sports flannels at the left of the picture on the front of October 2002 Action Forum is Mr Brady. I hope all those of you who have equally good memories of the school in Solomon Road have responded to their plea for help in compiling a 'Memories of Meredale'. Can anyone answer the question that has arisen as to how and when it became 'Meredale' rather than Rainham Council School. I admit Council School does not sound either original or imaginative but cannot work out how it arrived at Meredale. Mardale House and garage are in the High Street, has that anything to do with it?

This month we feature several Christmas concerts and sing alongs, no longer are you restricted to the Nine Lessons and Carols at the local churches, now you have a choice of venue if you just fancy a good evening singing Christmas songs. Of course you will also be more than welcome at the many special services provided over the Christmas period in our churches, sometimes we become so caught up in the commercial side of the festival it is easy to forget what it should be all about, so it is good to spare some time to reflect and enjoy the Christmas story.

As with many organisations the Lions Club make December one of their major fund raising periods. This year they are planning a huge refreshment tent at the Dickens Festival in Rochester on the 7th and 8th, a street collection on the 14th, their popular Christmas Sleigh Runs from the 17th to 20th and another collection at the large Tesco supermarket over the weekend of 21st to 22nd. All the money raised is used throughout the year for local people so do please support them generously. They can make all the difference to families who have a spell of bad luck.

So plenty to do this month, even a few walks if the weather stays fine, just the thing to work off those Christmas excesses. Until the new year do have a very good month and we will see you again, as usual, towards the end of January to allow our distributors a well earned short rest and hopefully avoid the worst of the winter weather. See you then.

Correspondence

CHRISTMAS FAYRE

Dear Editor,

St Peter's Church, Bredhurst, will be holding their annual Christmas Fayre in Bredhurst Village Hall at 2.00pm on Saturday 7th December 2002.

Father Christmas will be in his grotto, there will be the Grand Draw, and all the usual stalls of gifts, cakes, plants, bric-a-brac, tombola, games, books and lots more. As an added attraction this year, there will be a live performance, at 3.30pm, by Bredhurst Village Children's Choir, who will be singing carols and seasonal songs.

Please come along and get into the Christmas spirit with us. Your support is greatly valued, and we would love to see you.

Yours sincerely
Mrs J. Cox
01634 268544

COME AND SING

Dear Editor,

Wigmore MADS present 'COME AND SING', an evening of Christmas Music and a chance to join in singing with the carols on Thursday 12th December at 8.00pm in St Matthew's Community Centre, Drewery Drive, Wigmore.

Tickets £4 (£3.50 concessions), including mince pie and coffee, available from Sue Burrows - Medway 370639.

We are also looking for new members to come and join us for our Music Hall in March 2003. Maybe your talents include singing, acting, building scenery, painting, creating props or sewing costumes. We always need all kinds of help, why not give it a try?

Yours sincerely,
Mrs Sue Burrows

PIERCE FAMILY HISTORY

Dear Editor,

I am researching the branch of my family who came from Rainham and I am hoping for copies of some old photos, perhaps old postcards, of Rainham and any information available on the shops in the High Street in the early 1900s. My grandfather ELLIS PIERCE was a grocer in the High Street and my father ERNEST VERNON PIERCE was born there in 1890.

Many thanks for your help.

Yours sincerely,
Doreen North
The Rosery
38 Little Bushey Lane
Bushey Heath
Watford
Herts WD23 4RN
Tel: 020 8950 6823
E-mail: north@bushey-heath.demon.co.uk

HISTORY PROJECT

Dear Editor,

Some months ago I wrote to your magazine asking for help with an oral history project. The project was to provide online resources for primary schools teaching on the history curriculum. I was seeking volunteers to be interviewed who had memories of growing up in the local area before and during World War Two. I was extremely pleased that several people contacted me and were subsequently interviewed as part of the project.

If any of your readers are interested in viewing the video clips, they can be seen on the school website at www.fairview-jun.medway.sch.uk. Follow the link to the oral history project. The resource is designed for schools with fast Internet connections. As most of the interview clips are between 2 and 3MB I would only recommend viewing them if you have a broadband connection due to download times.

Thanks again to your magazine and all who volunteered to take part!

Yours sincerely,
R. Halls
Deputy Headteacher
Fair View Community
Junior School
01634 231618

MEREDALE SCHOOL

Dear Editor,

I was saddened to read in the November issue of Action Forum that the infant school is to be closed down next August. I started school there in September 1940. I remember it like it was yesterday. My mother and her friend Mrs Cross (121 High Street, Jewellers) took daughter Anne and myself. We walked down Ivy Street and Anne and I went happily into our first day. My memories from there include a little play we performed called 'Pictures in the Fire'. The teacher's desk was disguised as a fireplace and we children were dressed as nursery rhyme characters as we walked through the underside of the desk. As war went on we were issued with gas masks to carry to school. One day a little boy offered to carry mine, which he did to the top of Ivy Street. He then demanded a kiss as payment which I was glad to give

and happy to receive since it was my very first from the opposite sex! The only teacher I remember is Mrs Babbage. I wonder if she is still alive? She sent me into the hall many times to find out the time from the big clock hanging there. She also stood me in the corner of the classroom one day for failing to return a book to one of my classmates from whom I had borrowed it. Needless to say I returned the book next day.

My parents owned the newsagents (Greens) at the top of Ivy Street and I suppose because it was comparatively safe in those days Anne and I were allowed to walk to school and home alone each day. Anne and I were friends for many years until we were married and then we lost touch. I would love to hear from her if she is still in Rainham. I shall be visiting England next June 2003 and will certainly make a point of going to see my old schools while I am in Kent. I look forward to renewing my memories, and maybe some acquaintances of old friends.

Sincerely,
Wendy (Green) Bean
555 N. Pantano Road
+388, Tuscon,
Arizona. 85710 USA.

BURNS NIGHT BARN DANCE

Dear Editor,

Medway and Maidstone VSO group will be holding their annual BURNS' NIGHT BARN DANCE fund raising event on Saturday 25th January 2003 at Chatham Grammar School for Boys, Letchworth Avenue, Chatham, starting at 7.30pm - long time supporters will notice this is a new venue for us. We welcome the return of 'Pilgrims Way' and their excellent caller to supply the music and a hot supper will be provided although we ask participants to bring their own drinks and glasses - you will need them! This is always a popular event, tickets being priced at £7.50 and must be bought in advance. If any Action Forum readers would like further details or tickets please phone Pam or Philip Cole on Medway 376608.

Yours sincerely,
Pam Cole (VSO Local
Events Co-ordinator)

Abbeyfield

Where older people find care in housing

DAY CARE

available for pensioners between
9.00 and 3.00pm or 6.00pm

Come and meet people -
have your Hair done and Good Food
at Rogers House Residential Home

Contact: Mrs Pam Harrington -
01634 262266 KCC Registered

SALMON WINDOWS

Family run business with 20 years experience

- Conservatories - designed and built
- UPVC windows doors & porches
- UPVC soffit & fascia
- Misted units replaced
- Fensa document L approved
- 10 year insurance backed guarantee

For advice and very competitive quote:

01634 363881 / 07973860369

Diary 2002

Keeper: Mrs Christine Smith
275 Wigmore Road
Wigmore
Tel: 233098

No charge is made for Diary entries
Diary Copy Date: 31st December 2002

December 5th-14th – Medway Little Theatre, 'A Christmas Carol', 7.30pm. Box Office 400322.
December 7th-9th – Christmas Tree Festival, St Matthew's Church, Drewery Drive, Wigmore. Admission free. Saturday 7th 10.00am to 4.00pm. Sunday 8th 2.00pm to 4.00pm. Monday 9th 2.30pm to 4.00pm. Ring 235056 for details.
December 7th – Sing Out Christmas – Carol singing around the Christmas Trees at St Matthew's Church, Drewery Drive, to music from the Gillingham Salvation Army Band.
December 7th-8th – 10.00am to 5.00pm. Christmas Show at the Old Reed Bed Pottery Studios, The Street, Lower Halstow. Opposite the Three Tuns public house. Daytime enquiries 01795 842481.
December 7th – Bredhurst Christmas Fayre, Village Hall, 2.00pm. Children's Choir 3.30pm.
December 7th & 8th – Rainham & District Dollshouse & Miniaturist Group exhibition, Guildhall Museum, Rochester.
December 7th – Medway Folk Dance Club. Christmas Dance, American Supper. 7.30 to 10.00pm. United Reformed Church Hall, Balmoral Road, Gillingham.
December 9th – Great Lines Music Centre Christmas Concert at St Matthew's Church, Drewery Drive. Admission free with a retiring collection.
December 9th – Mothers' Union Carol Service – open to all at St Matthew's Church, Drewery Drive.
December 10th – Gillingham and District Fuchsia & Pelargonium Society. Christmas Party.
December 10th – Rainham Evening Machine Knitting Club. 8.00 to 10.00pm. The Red Cross Gillingham

Centre, 31 Balmoral Road, Gillingham. Contact no. 01634 862673.
December 11th – Rainham Flower Club. Christmas Party.
December 11th – Bredhurst WI. Birthday Party. Entertainment by The Kent Music School. 7.30pm in the Village Hall.
December 11th – Medway Camcorder Club, Animation Demonstration. 7.30pm, Medway Motor Yacht Club, Borstal. Ring 371570 for details.
December 12th – Gillingham Flower Arrangers. Social Evening. 7.30pm, The Garrison Church Hall, Mansion Row, Brompton.
December 12th – Wigmore Thursday Club. Mrs Phippen 'Christmas Stocking', 2.00pm, St Matthew's Community Centre, Drewery Drive, Wigmore. For people over the age of 50. For further information telephone 235507.
December 12th – MADS, COME AND SING, Christmas Music, St Matthew's Community Centre, Drewery Drive, 8.00pm. Tickets £4 (£3.50 concessions) includes mince pie & coffee. Box Office 370639.
December 12th – Countryside Event, Birdwatching Cruise, £17.50 payable in advance. Ring 378987 for details.
December 13th – Gillingham and Rainham Local History Society. Frosts, freezes and fairs chronicles of the frozen Thames and Medway (with slides) from 7.15pm, Adult Education Centre, Green Street, Gillingham.
December 14th-15th – 10.00am to 5.00pm. Christmas Show at the Old Reed Bed Pottery Studios. (see 7th Dec)
December 14th – Sittingbourne Orpheus Choral Society. Music for Christmas Concert, 7.30pm, Swallows Leisure Centre, Sittingbourne. Tickets £8.50 (£6.00 concessions, accompanied children under 11 free) from 01634 233521.
December 14th – Countryside Event. Children's Christmas Crafts, 10.30 to 12 noon. Riverside Country Park. £1.50, book on 378987.
December 14th – Medway & District HF Holidays Group walk, meet 10.30am Tenterden High Street, opposite church by the Eight Bells.

December 16th – Rainham Evening WI. Letter 'X'. Xmas Party. Hand Chimes – Mrs Barbara Brown. 7.30pm, Platters Lodge, Highfield Road, Rainham.
December 16th – Wigmore WRVS Darby & Joan Club. Christmas Tea and Raffle.
December 16th – Countryside Event. Talk, Riverside Country Park, 7.30pm, 'Heritage Museum'. £1.60, book on 378987.
December 18th – Bredhurst Garden Club. CHRISTMAS DINNER. Members only.
December 18th – Wigmore Afternoon Townswomen's Guild. Christmas Party.
December 19th – Rainham WI Christmas Party.
December 19th – Wigmore Thursday Club. Carol Service.
December 21st – Instep Dancing Christmas Dance. Rainham School for Girls. Enquiries 01634 363738
December 21st – Quiz Night at the Oast House. Contact no. 374558.
January 2nd – Countryside Event, Capstone Country Park, Children's Event. £1.50, book on 812196.
January 4th – JUMBLE SALE. 11.00am at St Matthew's Community Centre, Drewery Drive, Wigmore.
January 4th – Countryside Event. Festive Guided Walk of Capstone Country Park. £1.50, book on 812196.
January 4th – Parish of South Gillingham Dortmund Exchange Group, Jumble Sale, 11.00am, St Matthew's Community Centre.
January 10th, 11th, 16th-18th, 24th, 25th, 30th-1st Feb – RATS, 'Babes in the Wood', 8.00pm (Sat also 2.00 & 5.00pm). £5.00, Box Office 360506.
January 11th – Countryside Event. Birdwatching Cruise, £17.50 payable in advance, 378987.
January 11th – Medway & District HF Holidays group walk, 10.15am, Hollingbourne Station. Dry packed lunch, 7.5 miles.
January 11th – Instep Dancing.
January 14th – Medway Antique & Collectors' Club. 7.30 for 8.00pm, St George Hotel, New Road, Chatham. 17th century tokens – Mr Ron Josland. Ring 365861 for details.
January 15th – Bredhurst Garden Club, Bredhurst Village Hall, 8.00pm. Illustrated talk 'Birding in

Kent'. Mr C. Bradshaw, details from 233554.
January 17th – Gillingham Recorded Music Society. A little light music. 7.15 to 9.15pm. St Augustine's Church Room (top of Rock Avenue), Gillingham.
January 22nd – Wigmore Afternoon Townswomen's Guild. Presentation. Competition: China Flower. 1.45 to 4.15pm, Howard Hall, Woodside, Wigmore.
January 22nd – Countryside Event Bird Walk, 11.30am, Riverside Country Park. £1.50, book on 378987.
January 25th – Medway & Maidstone VSO Burns Night Barn Dance, 7.30pm. Chatham Grammar School for Boys, Letchworth Avenue, Chatham. Tickets (inc hot supper). £7.50, ring 376608 to book.
January 25th – Instep Dancing.
January 27th – Medway Spinners, Dyers & Weavers Association. Coat Hangar Free Expression Weaving. (see 13th Jan)
February 22nd – Channel Theatre Company at Upchurch Village Hall, 8.00pm, 'Spooky Little Girl'. Tickets £5 (£4 concessions) from 231326 or 230526 early January.

PANTOMIMES


Hazlitt Theatre, Maidstone. THE WIZARD OF OZ. Monday 2nd December 2002 to Sunday 5th January 2003. Box Office – 01622 758611.
The Marlowe Theatre, Canterbury. DICK WHITTINGTON. Thursday 5th December 2002 to Sunday 19th January 2003. Box Office – 01227 787 787.
The Orchard Theatre, Dartford. JACK AND THE BEANSTALK. 6th December 2002 to Sunday 12th January 2003. Box Office – 01322 220000.
The Central Theatre, Chatham. DICK WHITTINGTON. 10th December 2002 to 5th January 2003. Box Office – 01634 338338.
The Rainham Theatrical Society. BABES IN THE WOOD. January 10th, 11th, 16th 17th, 18th, 24th, 25th, 30th, 31st, February 1st, 2003. 8.00pm Sat also 2.00pm and 5.00pm. Box Office – 01634 360506.
Medway Little Theatre. A CHRISTMAS CAROL. 5th to 14th December. Box Office – 01634 400322.

ROOTS ☎01795 522 200


Specialist kitchen / bedroom suppliers
Appliances and ceramic tiles

Wildwinds Barn, Norton Crossroads,
Teynham, Sittingbourne, Kent, ME9 9JY

www.roots.eu.com/af.htm

 **GREG BRYANT**
CONSTRUCTION
MEDWAY 231321

REGISTERED HOUSE BUILDER
EXTENSIONS BLOCK PAVING
ROOF CONVERSIONS

 *Free Surveys
and Estimates*

RALEIGH MAIN AGENTS
C & S BIKES

20 East Street
Sittingbourne

JOIN OUR XMAS CLUB
01795 426667



MERESBOROUGH NURSERY

 *A range of quality
Chrysanthemums
available
throughout Oct/Jan*

**WE SELL AT WHOLESALE PRICES
TO THE PUBLIC**

Meresborough Nursery, Meresborough Road
Rainham. **Tel: 01634 231639**

KW ELECTRONIC SERVICES

No Call Out Charge
All TV, Video, Hi Fi, Cassette/Radio, etc.
Repaired & Serviced

ALSO RECONDITIONED TV & VIDEO
FOR SALE

All work guaranteed at least 3 months

TELEPHONE: Medway 364943

DOCTOR

G.P. PRIVATE PRACTICE

Dr. M. J. MURPHY
MB, BCh

1 Crevequer Chambers
35 High Street, Rainham

Monday - Saturday

Tel: 01634 231333

PNT LANDSCAPES

Garden & General Maintenance Services

From Mowing the Lawn to
Complete Garden Makeovers

PHONE FOR MORE DETAILS

Tel 01634 389850

MOBILE 07732 777837 or 0787 6228914

Puma pvc

Approved installers of
Fascia Soffit Guttering Cladding

- * 10 Year Guarantee
- * Free Quotations

WE GUARANTEE TO BEAT
ANY COMPETITOR'S PRICE !!

CALL NOW 01634 235900

159 Edwin Road, Rainham

All types of quality PRINTING POSTER PRINTS TO A0 SIZE



All types of quality SIGNS COLOUR COPY - PRINT & SIGNS

16 STATION ROAD, RAINHAM, KENT ME8 7PH 0800 783 0974

S.B. BRICKWORK LTD

BRICKWORK SPECIALISTS
AND GENERAL BUILDERS

Free Estimates and Advice
All types of work undertaken

Telephone: 01634 263416

YOUR LOCAL RELIABLE BUILDER

Grigson Ceramics
Specialists in Walls, Floors
Slate, Terracotta and Mosaics
Supplied and Fixed
or labour only
01634 235714

 **CRYSTAL Curtain & Blind Manufacturers**
Quality Made to Measure Curtains
TRACKS
HOME CONSULTANCY SERVICE
Unit IB10, Elm Court
Capstone Road
Gillingham
Kent ME7 3JQ
Nobody beats
our prices
FREE Fitting
Verticals
Pleated
Rollers
Venetian
Specialist
Phone: 01634 817807
Fax: 01634 408298
Mobile: 07904 587460
Email: crystal@cannon2.fsnet.co.uk

LIONS CLUB OF GILLINGHAM

The build-up to Christmas is one of the busiest times of year for the Lions Club of Gillingham - part of Lions Clubs International.

Members of the Club, who come from all parts of Gillingham and range in age from their twenties to their seventies, will be collecting money in a variety of ways, to be used to benefit people in the area who need a little extra help.

Here are some of the events that the Lions Club of Gillingham will be involved in during the coming few weeks:

Saturday/Sunday 7th/8th December - running the huge refreshment marquee (opposite Rochester Cathedral) as part of the Dickens Festival.

Saturday 14th December - annual Christmas street collection in Gillingham High Street.

Tuesday 17th to Friday 20th December - Christmas Sleigh Runs. In this popular annual event, the Lions' sleigh tours the streets of Twydale, Hempstead, Parkwood and Wigmore, playing carols. As the sleigh passes slowly by, Lions will be collecting donations from the nearby residents.

Saturday/Sunday 21st/22nd December - Christmas collection at Tesco supermarket by Bowater's roundabout. This traditional bucket collection against a background of carols, will this year be donated towards the much-needed state-of-the-art hand-held breast cancer scanner and diagnostic system for Maidstone Hospital - the centre for oncology that serves the Gillingham and Medway areas.

The Lions Club of Gillingham will be grateful for everyone's support in raising money this Christmas to help local people who may have hit on hard times, a spell of bad luck or are perhaps facing illness.

During the course of the year, the Gillingham Lions have helped a wide variety of local people and causes. For example, the Club has purchased many items of everyday domestic equipment; specialist equipment for disabled people; organised a holiday for a deserving family; organised harvest teas for old folk; and a host of other things. The Club also makes a regular monthly donation to the Air Ambulance

A DATE FOR YOUR DIARY

On Saturday 22nd February 2003, at 8.00pm, the Channel Theatre Company will once again visit Upchurch Village Hall.

Their performances in the past have been excellent, displaying skill, versatility and humour to transport their audiences to imaginary places.

This time the play is called 'Spooky Little Girl', written by Helen Kelly, who also writes for the Alan Ayckbourn Theatre in Scarborough. It is a supernatural thriller, which promises some comic moments together with a few surprises along the way. Don't miss it!

For tickets (£5 and £4 concessions) call 01634 231326 or 01634 230526 from early January.

MEDWAY ANTIQUE & COLLECTORS' CLUB

2002 proved to be another successful year for the Medway Antique & Collectors' Club. In the main, meetings were well attended by an encouraging mix of both members and visitors who enjoyed listening to speakers covering a wide range of subjects, some of which were illustrated with slides. The 2003 programme of ten talks is now complete and commences on 14th January with '17th Century Tokens' by Ron Josland. The highlight of this year's talks will undoubtedly be a visit by the well known David Sandon on 10th June giving an illustrated talk on 'Doulton & The Craftsman Potter Movement'.

Our social calendar also includes a day trip to Standen (NT) in May, a club barbeque in July, a weekend break in Salisbury in October and a Christmas dinner social in December. These events provide members and visitors alike with an ideal opportunity to meet each other in an informal, relaxed atmosphere and continue to be a popular aspect of club activities.

Membership fees are £15 per person per year, or you can come as a visitor and pay £2.50 on the night. Our club meetings are held every second Tuesday every month in the St George Hotel, New Road, Chatham, at 7.30pm for 8.00pm. Come and join us. You will be made most welcome. For further details please contact John Orr on 01634 365861.

REFLEXOLOGY

An ancient treatment that helps to relieve today's illnesses

HELP YOUR BODY TO HEAL ITSELF

Telephone for further information or to book an appointment

Home visits available

David Stride M.B.S.R., M.B.R.C.P.(Reflexology)
196 Wigmore Road, Wigmore, Gillingham, Kent
ME8 0TL

Tel: 01634 365510

Waverley Nurseries

622 Lower Rainham Road
Rainham, Gillingham, Kent ME8 7TX
Tel 01634 232520

Pansy's, Primroses, Roses,
Perennials, Shrubs from December
Christmas Trees
Holly Wreaths

Nature Notes

NATURE NOTES FOR NOVEMBER

In the south wall of St Margaret's Church is a stained glass window to the memory of Solomon Brice (1832 to 1904) who is buried in the churchyard. At the apex of the window is the scene of a grey partridge flying over a field of stooks of corn. With a few rare exceptions, corn is now cut by combined harvester and stooks have accordingly disappeared from the harvest fields.

In his book, 'Notes on the Birds of Rainham', published in 1894, Walter Prentis notes that the grey partridge 'is generally distributed in the district. Our chalk soil, with hill and valley, field and wood combined, makes excellent sport for the 1st of September'. Although grey partridges can still be seen locally, their numbers have drastically reduced since the days of Solomon Brice and Walter Prentis.

I have observed both the native grey and the introduced red legged partridge in the fields adjoining South Bush and Spade Lanes and on Gore Farm. Until recent years the former fields were used mainly for the growing of hops, apples, pears, soft fruit and other market garden produce. Today most of the land is used for the growing of cereals and the grazing of horses. In early November I walked the public footpaths and lanes of the area.

Corn fields in Solomon Brice's day would have been plagued with weeds, including colourful flowers such as corn camomile, cornflower or bluebottle, corn marigold, corn cockle and field poppy. Solomon would therefore be amazed by the lack of weeds in the vast majority of cereal fields these days. But he would find the fields of stubble adjoining South Bush and Spade Lanes somewhat familiar. The wheat growing this summer in these fields had been set by an organic farmer who had used no herbicides. Consequently the crop was full of weeds and even after the wheat had been cut the weeds continued to flourish - dock, wild carrot, bristley ox tongue and scentless mayweed, among other plants. There was, however, no trace of those colourful cornfield flowers beloved of painters of the countryside of the 1940s and 1950s such as S.R. Badman and C.F. Tunnicliffe.

I noticed during my walk that manure was being heaped in two of the three fields prior to being spread. This was a practice well known to Solomon Brice but one which has been largely replaced by the use of artificial fertilisers. Until the time that the three fields are ploughed the stubble will be a source of food for such birds as finches, skylarks and meadow pipits.

During my walk I disturbed a good many wood pigeons. The area provides a rich crop of food for them. They feed on cabbage, cherries, cereals and ivy and holly berries. I also came across a large flock of linnets which flew up to some wires until such time as I had passed. They were feeding on the hard and tiny seeds of the remains of a crop of flax.

I had my eyes open, in particular, for any grey partridges. They will normally spot you before you spot them. If a field appears to be empty of bird life it is a good practice to wait and see. Any grey partridges that are crouching close to the ground will eventually poke their heads above cover to see if you are still there. They will arise with a whirring of wings and calls of alarm if approached too closely.

Red legged partridges are easier to spot than the native grey. They are bigger, less timid and more colourful. If caught in the open with no cover they will run quickly away with heads held high. If there is cover they will hold their heads down and creep away.

I failed to spot any grey partridges on this occasion but there were plenty of red legged ones about. I watched one group through my binoculars preening themselves unconcernedly in the sunshine near Roman Villas. I would guess that they had been reared and were being fed by a gamekeeper. Whatever one may think about game shooting the fact is that the red legged partridge, a colourful character of the English countryside, would not be resident here were it not for shooting. It was introduced from the South of France, hence its alternative name of French partridge. Walter Prentis does not mention the species in his book and we can therefore assume that it was not to be found in the Rainham district in his day.

Joe Ennis

THE CHANGING FACE OF RAINHAM

Continued from November 2002

Mr William Henry Barling (late W. Rush) was in Manchester House, next to Ivy Street, and sold 'up to date drapery goods of every description, with a splendid selection of dress materials and curtains'. He was the agent for Frister & Rossmann's sewing machines and Mortimer Brothers High Class Dyers and Cleaners.

George Whayman was on The Banks, almost opposite Ivy Street, an 'Outfitter and Boot Merchant' who sold men's clothing of every description, ready made or gentlemen's suits to measure for 24/6d (£1/22½p) or trousers for 7/11d (40p).

Edwin Jelley nearly opposite at Cheapside on the eastern corner of Pudding Lane also boasted the most up to date stock of reliable clothing with gentlemen's ready to wear suits at £1. He gave 5% discount for cash and was agent for six stated brands of footwear.

Glass and Son, the family Bakers, were two doors east of Marlborough House and were very popular as pastry cooks and cake manufacturers beside being corn, flour and seed factors with van deliveries to all parts daily. They had their name painted high up on the side wall and I remember buying 2d of stale buns when an aunt told me to wait for lunch.

The Lion Hotel was a very busy hostelry being headquarters to The Cycling, Cricket and Football Clubs, The Cottage Gardeners Society, Ancient Order of Foresters and The Court of Anglo Saxons. Like all pubs they had their own Benefit Society which paid members during sickness or upon death with a share out in December. Phil Curling, mine host, was 'handicapper to all the principal Club and Race meetings in the District'. Professional running and cycling were popular even in the 20s and 30s and I remember seeing Sam Ferris the Olympic long distance runner who had been challenged to compete against a man named Walters from Upchurch.

The Rainham and District Co-operative Society Ltd, with all departments in Station Road, had only recently been formed at the turn of the century but its turnover in 1907 was £16,000 with profit of £1,500 and a membership of 505. Its telephone number is not quoted but I believe it was number 4. There were no

multiples except perhaps the Co-op which was owned by the members so the proprietors would know most of their customers and become important personalities within the village. A majority of the shops listed in 1908 were still within the same family ownership 20 or 30 years later.

A business which needed no advertisement locally was that of George Longley, Nurseryman and Florist, then operating from Mardale Nursery in Chapel Lane (now Miers Court Road) and Pond House just west of the present Durland House. Numbers 29 and 31 Miers Court Road still have the name Mardale Nursery 1905 high up on the front. I understand that the family came from Sheldwich in 1819, were founder members of the original English Rose Society in the 1890s and were the only Rainham firm to be granted the Royal Warrant which was exhibited on the front of Pond House. The rose gardens were a wonderful sight adjacent to the railway line between Station Road and Berengrave Lane and later on both sides of the lane below the railway arch. Although some members of the family branched out into farming the present Berengrave Nursery is operated by a direct descendant of those who came to Rainham nearly 200 years ago and I hope to write a separate story in a future issue as the history of the Longley family is very typical of the history of Rainham over the last two centuries.

Freddie Cooper

ADULT LEARNING

New Year's resolutions are just around the corner - what will yours be this year? What about taking up some new learning for work, for home or simply for leisure and pleasure?

The adult and community learning service has a new directory coming out later this month for courses starting January to July 2003. Copies will be available from all their centres and the local libraries. If you have trouble obtaining a copy you can telephone 01634 33 84 00 and ask for one to be posted to you.

Enrolments are being taken both before Christmas and in the New Year. The main centres in Gillingham and Rochester remain open for information and enrolments until Friday 20th December but are then closed until 2nd January.

**SUTTONS WITH
KHILKOFF-BOULDING & CO.
SOLICITORS**
84/86 High Street, Rainham
Specialising in
Conveyancing, Probate & Wills
Call us today for a competitive Quote on
MEDWAY (01634) 373333
Other offices situated throughout Kent
providing a complete professional legal service

ARTEX TRAINED
TEXTURER & DECORATOR
CEILINGS - Repaired, Replaced, Coved
DECORATING - Internal / External
Established 1988
NEIL MACE
19 Gayhurst Close 01634 376747
Rainham 07814 151393

MJH Electrical Services
Power - Lighting - Storage Heaters
Full / Part Rewires
Upgrade Fuse Boards and Earthing
No Job Too Small
FREE Advice - FREE Estimates
NO Call Out Charge
Telephone
01634 233852 - 07721071440

RAINHAM CAMERAS
NEW & USED PHOTOGRAPHIC
Equipment Bought, Sold & Exchanged
* Over 38 Years Experience *
EQUIPMENT REPAIRS FILM PROCESSING
BINOCULAR & TELESCOPE SPECIALISTS
NEW SERVICE
Old Photographs Copied & Restored
Quality Hand Printing in Black & White
Or in Old Fashioned Sepia
7 Station Road, Rainham, Kent ME8 7RS
01634 239866



SMART SYSTEM VEHICLE PAINT REPAIR
 Paintless Dent Removal, Upholstery, Dash & Windscreen Repair
 Scratches - Bumper Scuffs - Lacquer Damage
 Repaired at Home, Office or Business

Gary Etheridge

Mobile 07816 673636 Tel: 01795 843278
 2 Westmoreland Drive, Lower Halstow, Kent ME9 7EL

MUNN ACADEMY OF DANCE

Dance for Fun Est 1972

Pupils 2 yrs—Professionals
 Ballet, Tap, Modern Theatre,
 Gym, Disco, Cheer Technique,
 Drama & Singing Tuition
 Adult Tap, Jazz, Disco

Exams, Shows, Competitions & Cabarets

Principal: Lesley Munn
 Fellow & Examiner I.D.T.A.

MEDWAY 234168



D.H. MILLER

ESTABLISHED 21 YEARS

For all your Plumbing Services

HELP is on its way
*Upgrading & Servicing of
 old Systems a Speciality*

- CENTRAL HEATING
- LUXURY BATHROOMS
 & SHOWERS

MEDWAY 235831

Reg. No. 6629 36 High Street, Rainham



CAR AND COMMERCIAL BODY REPAIRS AND PAINTWORK
 162 High Street, Rainham, Kent. ME8 8AT
 24 Hour Recovery. 8am-6pm Tel: Medway 377803
 After Hours: Tel: Medway 379396

JOHN STYLES FLAT ROOFING

Strip & Re-felt
 All Work & Materials Guaranteed
 Free Written Quotation
MEDWAY 374028

J | A | D

CHARTERED ACCOUNTANTS

CHARTERED IN COMMON SENSE

ESTABLISHED OVER 20 YEARS

- Accounts
- Tax
- Book-keeping
- Payroll
- Audit
- Associated Services

Orchard House, Station Road,
 Rainham, Kent, ME8 7RS
 Tel: 01634 375222
 Fax: 01634 371318
 E Mail: j.a.d.associates@btinternet.com
 www.jad.sage24.com

Housemartin Scheme Limited

Carers required for weekdays, evenings and weekends, hours flexible. Domestic and Personal Care help given to the elderly, frail, mentally and physically handicapped.

Training provided — transport not essential. Four weeks paid holiday, enhanced payment for unsociable hours.

Telephone essential. For further details ring
Medway 01634 366528



Builders & Decorators

EXTENSIONS - GENERAL REPAIRS
 PLASTERING & ARTEXING
 REPLACEMENT UPVC WINDOWS

Telephone: Medway 235383

177 Wakeley Road • Rainham • Kent • ME8 8NJ

THE ORIGIN OF A NAME - CARVORAN

Dear Editor,

As long time residents of Carvoran Way in Wigmore, we have often mused on the name and where it originated.

Local readers might be interested to know the results of some recent holiday research we undertook. Some years ago we were looking at an ordnance survey map of Hadrian's Wall and noticed a little known fort marked as site only called 'Carvoran'. This year we took the opportunity to visit Hadrian's Wall and using our old OS map managed to find the site easily — now housing the 'Roman Army Museum'. (Incidentally worth a visit and contact can be made through www.vindolanda.co or 01697 747485.)

On enquiring at the museum, staff were interested in our story and pointed to ridges in the neighbouring field indicating the rectangular outline of the fort. Unfortunately there has been no excavation of the site yet due to a lack of funds.

Oh and the meaning of Carvoran — 'Most glamorous place in the bog!' We think we prefer the Latin version!

One final point readers might be able to answer is why did Edward Drewery choose this name when the bungalows were built?

Yours sincerely
 Pam and Philip Cole
 01634 376608

FASCIA PLASTICS
 FASCIAS SOFFITS BARGEBOARDS CLADDING GUTTERING
Where Quality Counts!
FREE QUOTES NO OBLIGATION
 Removal Of Old Timber
 Maintenance Free Exteriors
 Full Ventilation With Bird Guard
01634 321202
 OR
01622 205210
 VIEW AN INSTALLATION IN YOUR AREA
 10 YEAR INSURANCE BACKED GUARANTEE
 ABBERVILLE - 243 Edwin Road, Rainham, Kent ME8 8JL Email: kali.sky@virgin.net



Absolute Beginners

Watercolour

Treat yourself to a fun, relaxing,
 (stress-busting) day out in a country barn
 studio in Lower Halstow

ONE DAY CLASSES

Nov 27 Jan 15 Feb 12 Mar 12 Apr 2nd
 Phone Jacky for brochure: **01622 861983**

*Beginners Calligraphy
 with Gold Leaf*



RAINHAM SCHOOL FOR BOYS

Dear Editor,

Mr Austin's letter in August Action Forum was of great interest to my family and I thought it appropriate to add further comments. I attended the school from 1935 to 1939 and remember the staff at that time. Mr Smith was headmaster of the Boys and Miss Hare headmistress of the Girls School.

The schools were built round central quadrangles and I can place most of the masters in their specialist rooms. Mr Gleadle, science and maths, Mr Norman Pharaoh, music, he later married one of the girls' teachers, Mr Bill Taylor next door to Mr Alan Fenton, sports. In the corner room, Mr Bill Homes taught maths: two years ago when I spoke to him he was in poor health. Mr Smyth, metalworker next door to Mr Sargeant, woodwork and finally Mr Bert Newell in the art room. Like Mr Austin I have special regards for the school, now a Junior School. All my sons attended there and currently two grand-daughters are pupils plus a grandson starting at the Infants in September. Fortunately, the present staff appear to be keeping up the tradition of excellence.

Yours sincerely,
 J.A. Foulser, MBE
 59 Broadview Avenue

CHRISTMAS SHOW AT THE OLD REED BED STUDIOS

The Street Lower Halstow

We are three local potters, two are recent graduates and the third a more established maker.

We will be having our Christmas show on the weekends of 7th-8th and 14th-15th December. Hours are from 10am to 5pm daily. Please ring 01795 842481 during working hours for more information.

CHRISTMAS TREE FESTIVAL:

7th-9th December

Everyone is warmly invited to visit our **Christmas Tree Festival** to be held in St Matthew's Church, Drewery Drive. Local organisations will be decorating their own Christmas Trees, some staging small displays, and collecting for their charity. Admission to the Church will be **FREE** —

CARLTON VISION REPAIRS

TELEVISION - VIDEO - SAT - CD
 REPAIRS

Fast Service Reasonable Rates

No Call Out Charge

Qualified Engineer

25 Years Experience

MED 360367

GORDON J. WHITING

Waste removal cheaper than
the local council

cooker, washing machine £8.00 each
three piece suite £18.00
double beds £12.00

HOUSE CLEARANCE -

01622 720010 Mobile 07860 559459

Licensed by K.C.C.

MAX THE PLUMBER

Established 30 years

**BATHROOMS
GENERAL PLUMBING**

Estimates Free

01634 231390

SUNSHINE CLEANERS

**WINDOW CLEANING
GUTTERS & FASCIAS**

Fed up with fair-weather window
cleaners. Then call us.

01634 271482

Mobile 07961 500737

WHY MISS WORK ?

Washing Machines, Dishwashers, Dryers, Cookers Etc.

ALL LEADING MAKES REPAIRED

Monday to Saturday 7am to 11pm

BY SQUADMATIC

Free call out—Free estimates

OFFICE 24hrs (01634) 373515

Mobile 07702 255105

CITY & GUILDS TRAINED ENGINEER Ex.R.E.M.E.



B D L GAS SERVICES
191 Station Road, Rainham, Kent

01634 232048

Visit your local gas showroom
for all your Gas Appliance needs

**Cookers, Fires, Surrounds
Fires on Live ! and all installation work**

DA CONSTRUCTION

CARPENTRY & JOINERY SPECIALIST
EXTENSIONS • LOFT CONVERSIONS

GENERAL
COMMERCIAL/DOMESTIC MAINTENANCE

City & Guilds / Institute of Carpenters
TOP QUALITY AT COMPETITIVE RATES

MR ARCHER

Tel: 01634 389604 Mobile 07961 839328

PH INTERIORS

THE START TO FINISH
CARPENTRY ~ DECORATING AND
HOME ALTERATION SERVICE

For a reliable and professional tradesman

Call 01634 327019 – Philip Hobbs

15 Hallwood Close, Rainham, Kent

Mobile 07798 647747

BUILDING CONTRACTS & GROUNDWORK

GTA
Driveways

Drainage Patios Fencing

01634 264090
07931 175220

FAMILY LEARNING

Medway adult and community learning service are now offering a programme of family learning – parents/grandparents and children learning through activities together. The classes are funded by the Learning and Skills Council and are free to participants. Activities on offer include: creative arts and crafts, cake decorating, flower arranging, computing, belly dancing and dance.

There are also classes for just the parents and grandparents to help with confidence building and parenting, such as: first aid, baby massage, building better behaviour with your child, sign language and assertiveness.

For more information telephone 01634 33 84 54.

HOME-START MEDWAY Supporting families with under fives

From Rainham to Walderslade, Cuxton to Grain we need volunteers from all areas of Medway.

Can you offer friendly support to a family in your community?

Do you possess the following?

- Parenting Experience
- A Listening Ear
- Spare Time
- Enthusiasm
- A Desire to Make a Difference

Could you be a volunteer offering regular support, friendship and encouragement for 2-3 hours per week to a family in their own home?
YES?

V.E. WHITE & CO.

Solicitors

For a complete legal service

Contact us for a competitive quote on

Medway (01634) 739195

Saturday/evening appointments may be available
Free Parking

MARK STEVENS

Paving Specialist and General Builder
20 years experience

DRIVEWAYS
PATIOS

BRICKWORK
PLASTERING

No job too big or small

Free estimates

Tel 01634 364932 Mobile 07946 443349

Then you could be just the person we are looking for. We offer a FREE COURSE of preparation.

Next course starts Thursday 16th January 2003 for 10 weeks, 10.00am to 2.30pm.

To find out more and to register your interest contact Home-Start Medway on 01634 570717.

DOLLSHOUSE EXHIBITION

The Rainham & District Dollshouse & Miniaturist Group will be at the Guildhall Museum, Rochester High Street, with an exhibition of dolls' houses and miniatures on Saturday 7th and Sunday 8th December. The exhibition forms part of the Museum's Dickens Christmas exhibitions. The group were invited to exhibit by the curator after he had seen the June exhibition. There will be a number of new exhibits and some of the houses and the market will have their Christmas decorations up.

More details from 312038.

Rainham Theatrical Society presents

'BABES IN THE WOOD' by Jack Homewood

January 10:11:16:17:18:24:25:30:31 & Feb 1st

Curtain up at 8.00pm

(matinees at 2.00pm and 5.00pm each Saturday)

Box Office: 01634 360506 (weekdays 9am-8pm)

OASTHOUSE THEATRE

Rainham, Kent

Seat Prices: £5.00

D.A.Price Services

Est. 1984

01634 233709/01795 842644
Mobile: 07860 733980

GENERAL HOUSE
MAINTENANCE
INTERIOR and EXTERIOR

Household/Shop
Maintenance and Repairs
Decorating - Coving
Carpentry - Fence Erection
Plumbing - Bathrooms Fitted
Odd Jobs



FAIRVIEW ESTATE AGENTS

157 Fairview Avenue, Wigmore, Rainham,
Kent. ME8 0PX

'The answer to all your property needs'

*RESIDENTIAL SALES *LETTINGS
*PROPERTY MANAGEMENT

CONTACT MICHAEL TURNER FOR DETAILS

TELEPHONE: 01634 377825

Small Ads

Published: January 18th
Copy date: January 3rd
Price: £1.65 per line
 Average 4 words to a line
Box Ads: £31.00 per month
 £85.50 3 months paid in advance
 Please contact H. Mackay Miller,
 5 Meresborough Cottages,
 Gillingham, Kent ME8 8PP
 01634 231307

MATHS/PHYSICS TUITION
 GCE 'A' level, GCSE etc. Private
 tuition in your home by highly
 experienced/qualified tutor,
 B.Sc.Hons, Cert. in Education.
 Please ring 01634 377267.

PAINTER/DECORATOR
 30 years' experience.
 Tel: Doug Marchant
 01634 373016 or 07930 627241
 for free estimate.

REFLEXOLOGY. Holistic
 therapy to aid relaxation and help
 the body heal itself. For further
 information or to book an
 appointment please contact Jenifer
 Carr MBSR on Medway 376784.

LEAKING TAPS RESEATED
 Loft and Toilet overflows.
 Medway 262912.

DENTIST: RUTH LINDSAY,
 BDS. NHS dental treatment for
 elderly housebound in your own
 home. All denture work. Free
 denture repairs. Free treatment if
 on income support.
 Tel. 842566 (surgery hours)

RAINHAM CHRISTIAN
FELLOWSHIP. Sunday Services
 10.30am and 6.30pm at Begonia
 Avenue Church, Twydall.
 Further details from Jim
 Crompton, 01634 408438.

ROOFING CONTRACTOR
 All types of roofing work,
 vertical tiling and guttering
 undertaken. Estimates Free.
 Phone Dave Moon on 375069.

PIANO, KEYBOARD, Recorder
 tuition. Ages 6-60. Wish you had
 continued with lessons?
 Qualified, experienced teacher.
 Mrs J. Prebble, Med: 231166.

DRUM KIT & PERCUSSION
 lessons. Mr Roan Kearsley-
 Lawson, BA(Hons), MA.
 Tel: 01634 365453.

MR DIG-IT'S GARDEN SERVICE
 01634 574676 Mob. 07787 813512.

LOCKSMITH/CARPENTER
 All doors and locks supplied and
 fitted. Mobile key cutting, 24hrs.
 Call Frank 01634 239400
 Mobile 07751 251411.

NEED A PLUMBER?
 For that small job or annoying
 leak tel: 234149.

LAWNMOWER SERVICE
 Sharpening and all Garden
 Machinery repairs. Med 361217.

SOPHISTICATS as well as being
 the most comprehensive gift shop
 in the area, we have built up a
 reputation for our first class
PICTURE FRAMING service.
 Be it tapestry, collage, print, oil
 or medals, you will always find
 advice on hand as to the best way
 of presenting them at 31 Station
 Road, Rainham. Tel. 361436.

TAPE/SLIDE SHOWS.
 Kent Villages etc. Ideal for club
 evenings, usually available at
 short notice.
 Mr C. Coe, Medway 361240.

TEA DANCE
 St Matthew's Community Centre,
 Drewery Drive. Mondays except
 every second Monday of the
 month. 2.00-4.00pm. £2.50.
 Free car park. 07761 707975.

D.A.C. GARDEN SERVICE
 General Garden Maintenance
 undertaken. No job too small.
 Tel: 01634 371005.

RE-UPHOLSTERY
 Reasonable rates, free estimates.
 Ron James: 01795 520635.

Chiropodist J. JUDGE Ch.P.
 Corns, Calluses, Ingrowing Nails.
 Home Visits. Med 361720.

LIGHTEN YOUR DARKNESS
 Call Barry Pickance Electrician
 for domestic electrical work.
 J.I.B.-apprentice trained/16th
 Edition. Free estimates - NO job
 too small. Phone Med 372739
 Mobile 0794 1127 827.

CARPENTER EST 30 YEARS
 Property maintenance including
 doors, windows, flooring, roofing
 and general domestic/building
 work. Reasonable rates.
 01634 230821 or 07786 280450.

BUY DIRECT FROM THE
FARMER - All our own Apples
and Pears, including Cox, Gala,
Braeburn, etc. From PUMP
FARM, Pump Lane (below
bridge), Rainham. Open 6 days
per week 10am-4pm. Closed
Mondays only. (Our farmshop
policy is to sell our own, local &
Kent produce).

PROFESSIONAL TREE CARE
 Stump Grinding Specialists. All
 tree work undertaken. Topping,
 Lopping, Hedge Trimming.
 Fully Insured and Qualified.
 Competitive Prices.
 Call James at STUMPMASTERS
 on 01634 361472/07789632438.

LES GENERAL BUILDER
 All building work. Repointing.
 Patios, Drives, Walls, Garages.
 No job too small. Free estimates.
 Phone Les on 01634 264388 or
 07740 242676.

For STANNAH STAIRLIFTS
 new or reconditioned. Also
 electrical work carried out.
 Tel: Contact for Electrical
 01634 374524 for free estimate.

ST MATTHEW'S COMMUNITY
Centre, Wigmore - excellent
 modernised centre with main hall
 and meeting rooms available for
 hire at competitive rates. Full
 disabled access, hearing aid loop,
 excellent kitchen. To book phone
 01634 370492 or 235518.

LANDSCAPE & PROPERTY
 Maintenance. Tree & Conifer
 Surgery, Felling, Lopping,
 Topping, Hedge Cutting, Gravel
 Laid, Sheds, Garages, Gardens
 Cleared, Sheds Repaired and
 Refelted, all types Fencing.
 No Job too Small. Free advice
 and estimates for a first class job.
 Friendly, professional service.
 Call Colin: 01634 261749,
 07970 759404.

THE GRANARY CHURCH
 Rainham Evangelical,
 Rainham Community Centre,
 Granary Close
 Sunday - 10.15am
 Other meetings in homes.
 Pastor: The Rev. P.S. Harper.
 Details Tel 01795 844031.

GENERAL HANDYMAN
 For all those jobs you never get
 around to. Home & Garden
 improvements. Call Tony 01634
 575491. Mobile: 07855 190184.

JOHN INNES SEED &
POTTING COMPOST always
 available. 20 kilo bag: £2.50.
 Also 300 litre Grower Bales of
 Peat: £9.50. Meresborough
 Nursery - Medway 231639.

PICTURE FRAMING. 15 years
 experience. Home selection
 available. 183 London Road,
 Rainham. Tel. 375670.

STREET SWEEPER REQUIRED
 by Bredhurst Parish Council.
 Duties to include clearing
 pavements of leaves and debris,
 picking up litter and emptying
 litter bins. A total of 30 hours is
 required to be worked over a
 2-month period during Autumn
 and the remaining 12 hours
 spread over the rest of the year.
 Hourly rate of pay is £6.00.
 If you are interested in this
 position or would like further
 information please contact
 Dennis Johnson on 01634 364020.

TREE STUMP GRINDING
AND TREE REMOVAL
SERVICE. Tel Roger Alsey,
 01634 376776 for an estimate.

DISNEY FLORIDA USA
 accommodates 10 people.
 Privately owned luxury villa
 overlooking a peaceful lake.
 10mins to Disney, 15mins to
 Universal studios, large Private
 Screened Pool. Car hire, flights,
 taxi from airport arranged.
 Details call 01634 267427 -
 07970090442.

WEDDING BOUQUET
Preservation & Framing in 3D.
 Call Marilyn at **Flowers Forever.**
 Tel/Fax: 01634 373381.

UPCHURCH VILLAGE HALL
 Ideal hall for Weddings, Parties
 and Meetings. Facilities for the
 disabled. Attractive setting -
 Ample parking. To book phone
 01634 364859.

BACK & BODY TREATMENTS
 Muscular & Skeletal Injury.
 Sports & Dance Injury.
 Massage & Reflexology.
 01634 234835 or 07719 794847.

HEMPSTEAD PAVILION
PLAYGROUP. Places available
 for 2½-5 years. OFSTED
 registered/inspected. Qualified
 staff. Phone Medway 234718
 (9-12), 373424 (eves). Registered
 Charity No. 1077736.

PIANO & KEYBOARD Lessons.
 Relaxed and Reasonable.
 Pam Ormiston 01634 365789.

ACCORDION TUITION
 Roger Letley. 01634 230434.

WANTED. SPAIN September
 2003. Flat or Apptmt to Rent.
 Alicante Town or near
 01634 376881.

PARKWOOD COMMUNITY
ASSOCIATION. Hall and
 Meeting Rooms available to Hire
 at competitive rates.
 Memberships to the Association
 also available. All enquiries to
 Office on Medway 371886.

PARKWOOD CHRISTIAN
FELLOWSHIP, Parkwood
 Green. Sunday Morning Service
 is at 10.45am to 12.15pm. For
 any other details about the
 Fellowship and its activities,
 please contact Richard Hayton,
 01634 235799.

HOLES. BIG OR SMALL.
 I'll dig them all. Footings to
 Ponds. Tel: 309397.

P.K.B.
 Painting & Decorating, Guttering.
 We also clean Guttering, Fascias,
 Drives, Patios, etc.
 We cut Grass and sharpen all
 tools. Free estimates.
 Phone Paul on 01634 364812.

The Hideaway Nursery for
 Seasonal Bedding, Shrubs,
 Climbers & Trees. **Garden**
Design, Landscaping &
Maintenance Service.
 01634 231693

105 Chaffes Lane, Upchurch
 Winter opening times
 Wed & Sat only 10 till 4

WIGMORE EVANGELICAL
FREE CHURCH, Durham Road.
 Sundays 11am and 6.30pm,
 Treasure Seekers and
 Ambassadors 10am. Bible
 Study and Prayer Meeting:
 Tuesday 7.45pm. Visitors
 Welcome. Pastor Rev T.J. Wood
 Medway 388187.

BELLY DANCER. Family
 entertainment for those special
 occasions, birthdays, etc.
 Med 374417.

Mobile Book-Keeping Services
 Computerised and Manual
 accounts, Tas, Sage and Quick
 Books. VAT, PAYE, Excel
 Bank Recs etc. Competitive rates.
 Tel: 01634 370176 (Rainham).

GRASS MOWING, HEDGE
 cutting, Weeding, Garden tidying.
 Friendly service. 01634 378763.

DISCO - professional enter-
tainment for any occasion.
'The Black Pepper Roadshow'
 Jim Lindsay 375552.

ANAM CARA HOLISTIC
THERAPIES. Birth charts, past,
 present, future. Tarot/Crystals.
 Professional Reiki & Indian Head
 Massage. Meditation Groups.
 Peaceful treatment room.
 01634 371788.

NEW!! PROFESSIONAL
Acrylic Nail Extensions by Jo
 only at Ladyfair.
 Ideal for Christmas or as a gift!!
 £27 a set. Mon-Sat evening
 appointments available.
 Tel: 01634 233749.

PHOTOSHOP/ILLUSTRATOR/
QUARK. Home tuition. Just need
 help, or basic/advanced training.
 For professional, friendly coach-
 ing call Steve 01634 375363.

**MIKE O'BRIEN
AND
SWINTON COLONNADE**

*Working together to find you a better deal
for all your insurance needs – Serving
the people of Rainham since 1969*

CALL US FOR AN IMMEDIATE QUOTATION
01634 373757

The Finance Centre (Rainham)
INDEPENDENT FINANCIAL ADVISER

Unit D4 Laser Quay Culpepper Close
Medway City Estate Strood Kent ME2 4HU
Tel: 01634 302701 Mobile: 07961 334561
Email: barry@thefinancecentre.fsbusiness.co.uk

Barry James MLIA(dip) CeMAP
Principal

A member of **DBS Financial Management plc**
which is regulated by the Financial Services Authority
DBS is part of the MISYS group of companies
www.dbsfinancialmanagement.co.uk

B. HAYFIELD & SONS
Builders

Established 1971

All Building / Maintenance Work
Carpentry & Painting
Roofing & Plumbing

Medway 234072

CARPETLINE

SHOWROOM 39 HIGH STREET, RAINHAM
Carpets, Rugs and Vinyl Supplies
HOME SELECTION SERVICE
Available Daytime, Evenings & Weekends

Medway 234882

THE SHOP WHERE
NOTHING IS TOO MUCH TROUBLE

Rainham Bookshop

17-25 Station Road Medway 371591

Over 50,000 books & maps in stock
Classical music, Jazz & Blues on CD
Local Artists' Gallery upstairs
Bygone Kent monthly magazine
BOOK TOKENS

Almost any book in print ordered
Mail order service home & abroad

**DAVE MOON
ROOFING**

Established 1971

REPAIRS, GUTTERING, VERTICAL TILING, FLAT ROOFS, NEW ROOFS

For Free Estimates telephone:

01634 375069

Day and Evenings

No Job too LARGE or SMALL
WE DO THEM "ALL"

In time of need ...

JOHN WEIR

Funeral Directors

A private family owned and run business

- 24 hour Personal Service
- Home visits if preferred
- Private Chapels of Rest
- Monumental Masons
- Pre-arranged Funeral Plans
- Horse Drawn Hearse available

01634 373111

130 High Street, Rainham
Kent ME8 8AR

01634 855558

127 Watling Street
Gillingham, Kent ME7 2YY
Car parking available

01634 408777

25 New Road, Chatham
Kent ME4 4QJ
Car parking available

